



INTEGRAL FRAME FIRE COUNTER SHUTTERS



WAYNE DALTON COMMERCIAL DOORS

Integral Frame Fire Counter Shutters

PROTECTION. QUALITY. CONVENIENCE.

The Integral Frame Fire Counter Shutters provide an attractive appearance for a variety of applications, including food service counters. Available for opening sizes up to 9' x 4' (2743 mm x 1219 mm), these doors carry a UL 1 1/2-hour Class B label and are factory assembled as a complete unit with fully welded frames. The frame comprises 16-gauge jambs and header, and is complemented by a 14-gauge sill, plus hood and fascia.

- OPENINGS UP TO 9' X 4'
- COMMERCIAL DURABILITY AND EXTREME FIRE PROTECTION
- WARNOCK-HERSEY UP TO 3-HOUR RATING DEPENDENT ON WALL MATERIAL
- 16-GAUGE FRAME AND 14-GAUGE SILL



INTEGRAL FRAME

Fire Counter Shutters

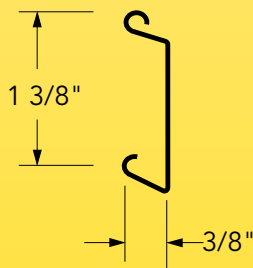
Standard Features Overview

Label	UL 1 1/2-hour Class B label
Maximum size	9' x 4' (2743 mm x 1219 mm)
Curtain	Interlocking 22-gauge stainless steel slats or 22-gauge galvanized steel slats
Integral frames/guides	No. 4 finish stainless steel or 16-gauge primed steel
Sill	14-gauge steel or stainless steel completely enclosed with fireproof acoustic filler
Hood	No. 4 finish stainless steel or primed steel
Operation	Push-up
Mounting	Between jambs
Locking mechanism	Interior slide bolts
Warranty	OEM limited warranty

Options

- UL Listed brush-type smoke seal
- Photoelectric or ionization-type smoke detectors
- Locking mechanisms: Cylinder locking bottom bar with mortise cylinders

Integral Frame and Sill Slat Data

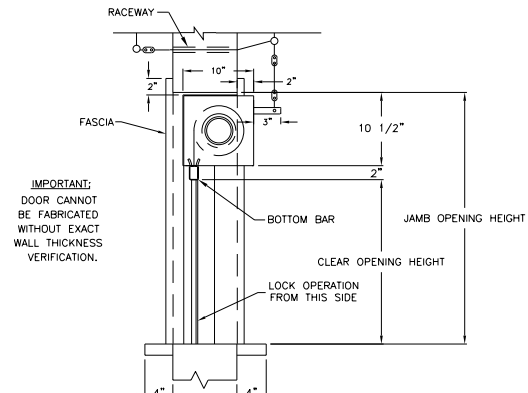
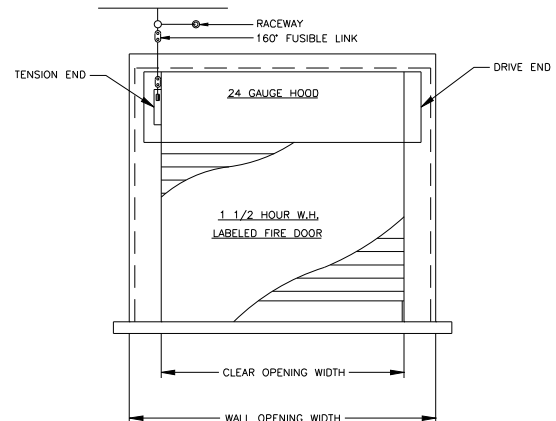


Opening	Width	Slat	Frame	Sill
Thru 9'0"	(2743 mm)	22 ga. ss	stainless steel	stainless steel
Thru 9'0"	(2743 mm)	22 ga.	galvanized steel	stainless steel
Thru 9'0"	(2743 mm)	22 ga.	stainless steel	stainless steel

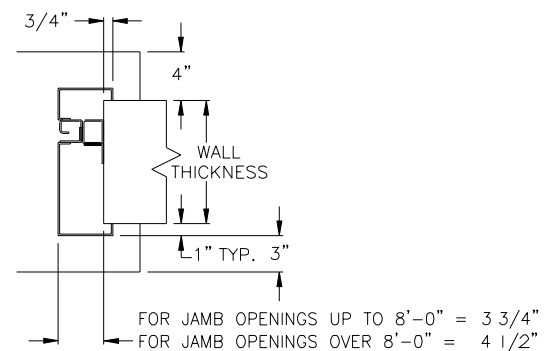
Slats are galvanized (ga) and painted or stainless steel (ss).

Door Clearance Elevations

Operation: Push-up



Wood Stud, Steel Stud or Masonry Jamb



For technical information visit:

www.Wayne-Dalton.com/commercial

©2014 Wayne Dalton, a division of Overhead Door Corporation. Consistent with our policy of continuing product improvement, we reserve the right to change product specifications without notice or obligation.

Item 352694